

1A Old Haymarket 73-89 Victoria Street, Liverpool, L1 6AF
Tel: 0151 305 2577
Email: liverpoolsales@ascendproperties.com
www.ascendproperties.com

Ascend

Built on higher standards



Park Lane Plaza, Park Lane, Liverpool, L18HG

£850 PCM

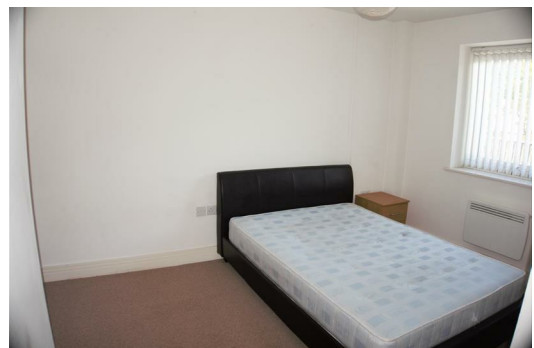
Video/Virtual Tour Available

This fantastic two bedroom apartment is situated in an ultra-stylish, peaceful development which rests just a stone's throw away from all the action of the city centre - the perfect destination for students and working professionals.

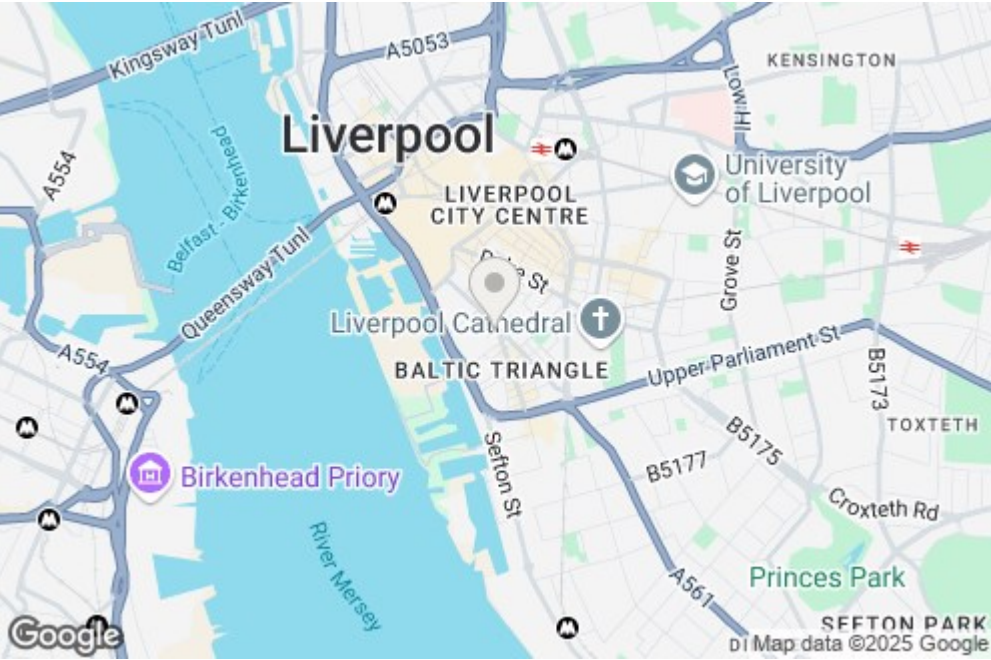
This fab property features a bright, open-plan lounge and a kitchen that benefits from tonnes of space - a rarity in city centre apartments. The kitchen has been decked out in a super-slick black and white design and comes complete with an integrated hob - very swish. With a bathroom and great sized bedrooms to match, this fully furnished property is ready to move into straight away.

The location is pretty top-notch too. A 5 minute walk will get you to Wapping Dock, with Liverpool One just a few minutes further - perfect for working professionals. If you take a quick stroll around your development you'll also find a great range of cafes and restaurants, as well as a chic bakery, brewery and the Lantern Theatre. If you fancy journeying further, there's a bus stop practically on your doorstep and Liverpool Central train station is just a hop, skip and a jump away.

Available 26th June 2025. 12 month tenancy. Deposit £980. Council Tax Band B.



5 Park Lane Plaza 2 Jamaica Street, Liverpool, Merseyside, L1 0AF



Energy Efficiency Rating		Current	Potential
Very energy efficient - lower running costs			
A	92-100		
B	81-91		
C	69-80		
D	55-68		
E	39-54		
F	22-38		
G	1-21		
Not energy efficient - higher running costs			
		75	82

Environmental Impact (CO ₂) Rating		Current	Potential
Very environmentally friendly - lower CO ₂ emissions			
A	35-45		
B	46-55		
C	56-65		
D	66-75		
E	76-85		
F	86-95		
G	96-100		
Not environmentally friendly - higher CO ₂ emissions			
		71	71